

2017 Season
Burdekin Region
Productivity Statistics
BKN410-Ramsdens

Data supplied by Wilmar Sugar

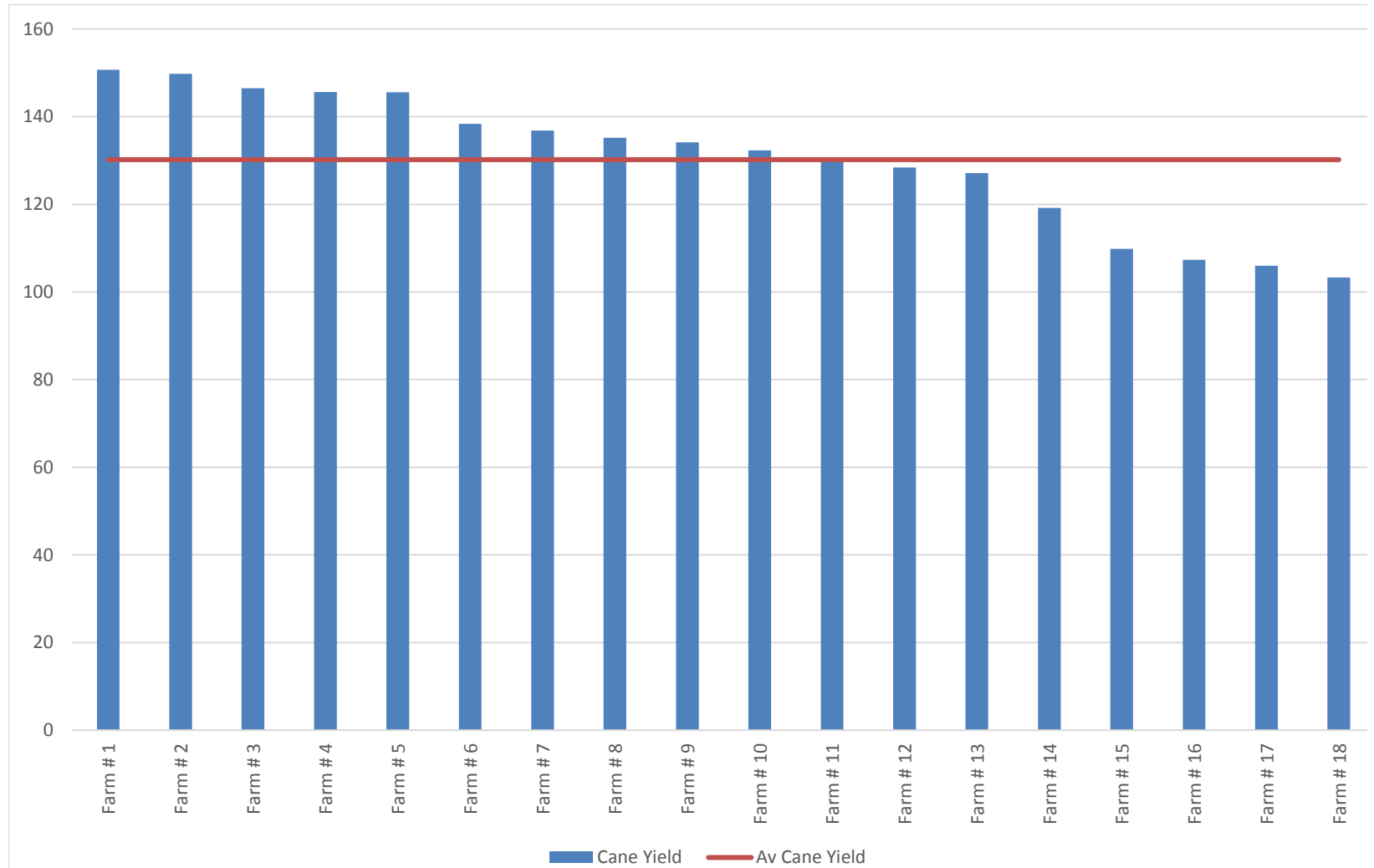
The cane price formula has been used to calculate the \$500 Return yield. This is for illustrative purposes only and is not intended to be a representation or guarantee of actual return.



Yield at \$500 Returns = $(\$500 * 0.009 * (\text{CCS A Relative} - 4) + 0.662 - 7.00 - 0.50) * \text{Yield Cane}$

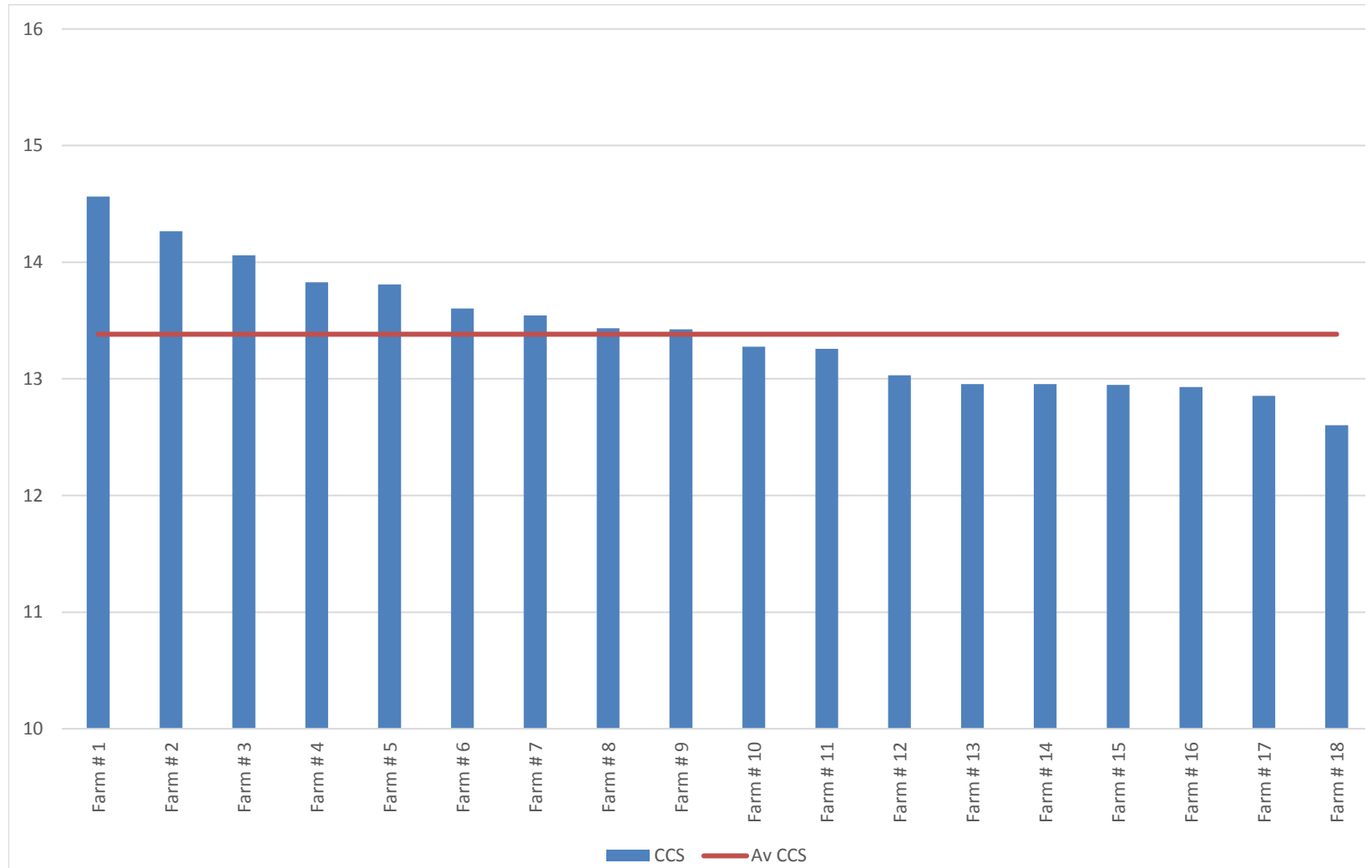
Cane Yield (tonnes per hectare)

Rank	Cane Yield	Av Cane Yield
Farm # 1	151	130
Farm # 2	150	
Farm # 3	147	
Farm # 4	146	
Farm # 5	146	
Farm # 6	138	
Farm # 7	137	
Farm # 8	135	
Farm # 9	134	
Farm # 10	132	
Farm # 11	131	
Farm # 12	128	
Farm # 13	127	
Farm # 14	119	
Farm # 15	110	
Farm # 16	107	
Farm # 17	106	
Farm # 18	103	



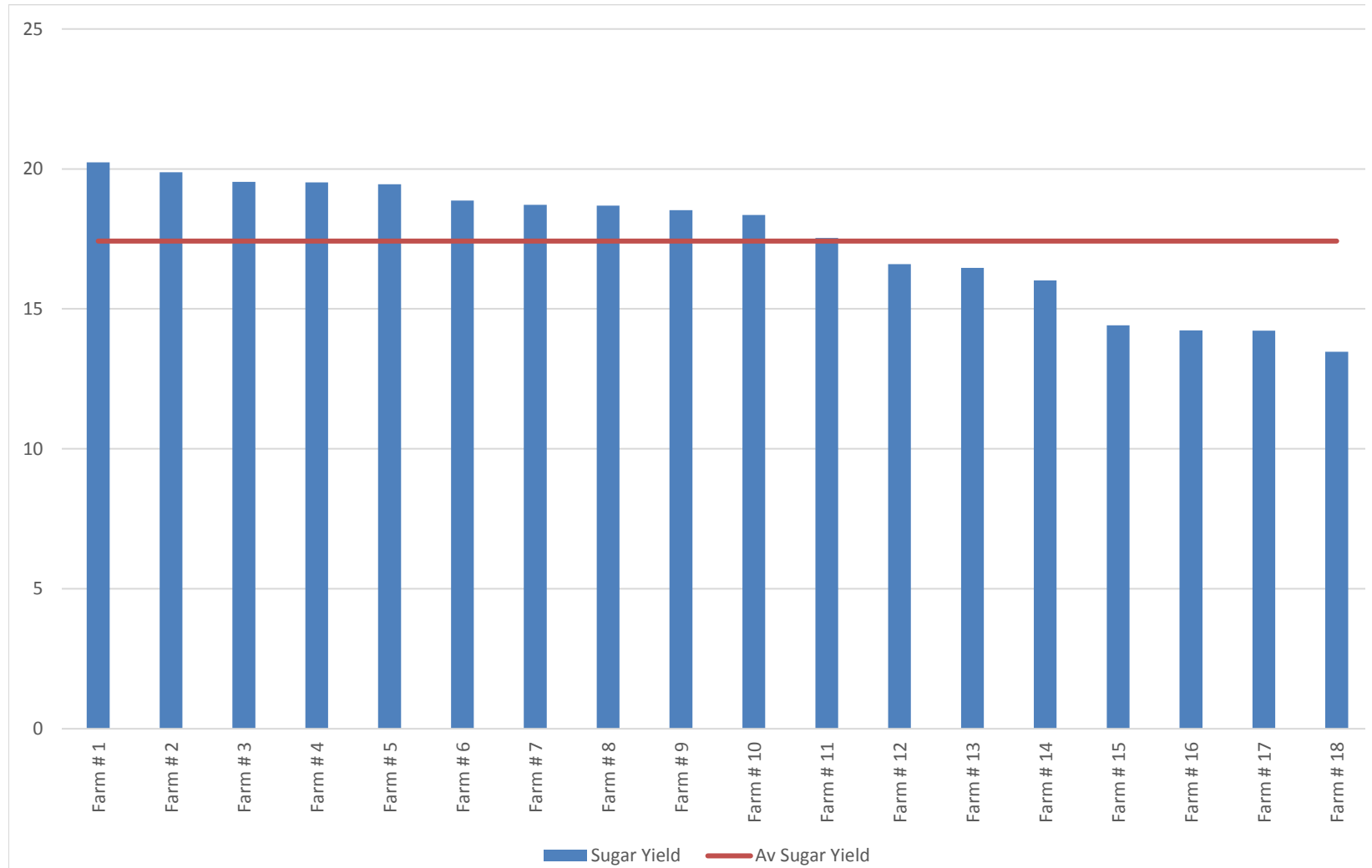
CCS

Rank	CCS	Av CCS
Farm # 1	14.6	13.4
Farm # 2	14.3	
Farm # 3	14.1	
Farm # 4	13.8	
Farm # 5	13.8	
Farm # 6	13.6	
Farm # 7	13.5	
Farm # 8	13.4	
Farm # 9	13.4	
Farm # 10	13.3	
Farm # 11	13.3	
Farm # 12	13.0	
Farm # 13	13.0	
Farm # 14	13.0	
Farm # 15	12.9	
Farm # 16	12.9	
Farm # 17	12.9	
Farm # 18	12.6	



Sugar Yield (tonnes per hectare)

Rank	Sugar Yield	Av Sugar Yield
Farm # 1	20.2	17.4
Farm # 2	19.9	
Farm # 3	19.5	
Farm # 4	19.5	
Farm # 5	19.5	
Farm # 6	18.9	
Farm # 7	18.7	
Farm # 8	18.7	
Farm # 9	18.5	
Farm # 10	18.4	
Farm # 11	17.5	
Farm # 12	16.6	
Farm # 13	16.5	
Farm # 14	16.0	
Farm # 15	14.4	
Farm # 16	14.2	
Farm # 17	14.2	
Farm # 18	13.5	



Return at \$500/t

Rank	\$500 Return	Av \$500 Return
Farm # 1	5465	4607
Farm # 2	5460	
Farm # 3	5318	
Farm # 4	5228	
Farm # 5	5206	
Farm # 6	5053	
Farm # 7	5042	
Farm # 8	4940	
Farm # 9	4805	
Farm # 10	4645	
Farm # 11	4642	
Farm # 12	4281	
Farm # 13	4250	
Farm # 14	4245	
Farm # 15	3854	
Farm # 16	3736	
Farm # 17	3675	
Farm # 18	3492	

