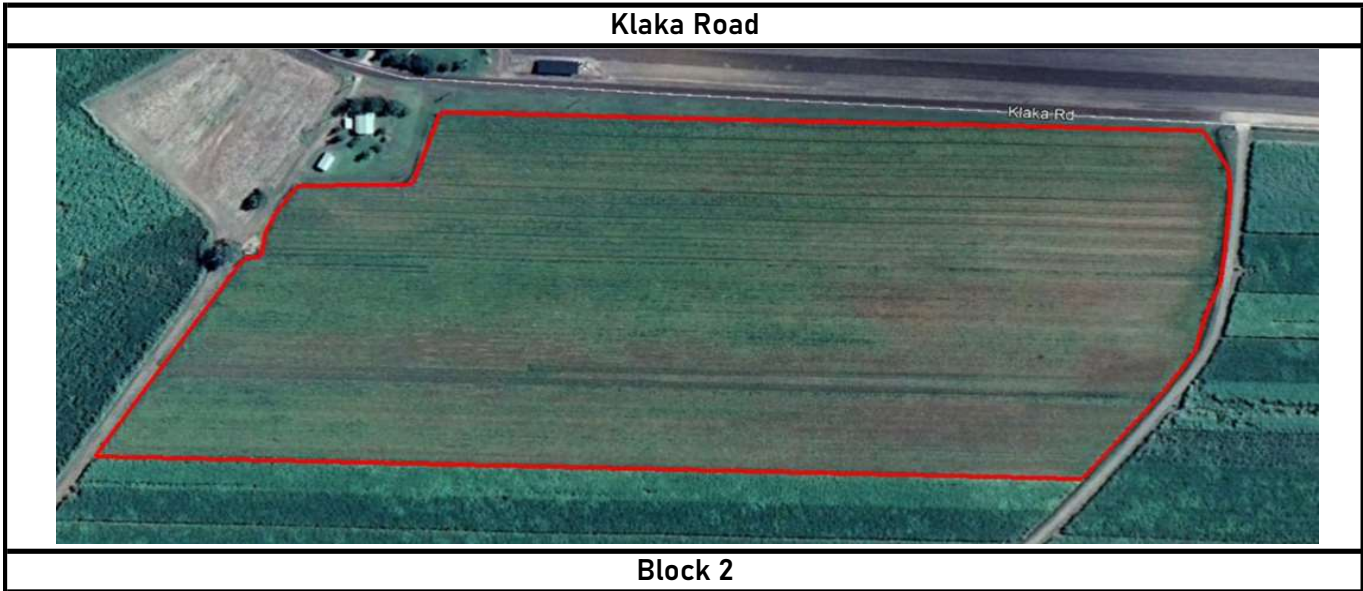


Inkerman 1R Distribution Plot 2023 Block 1				
Variety:	Rows:	Area (Ha):	Area (Ac):	Plant Source
Q240	24	1.65	4.08	Christo's MP & INK MP
Break Rows	2			Break Rows
KQ228	24	1.9	4.8	Inkerman MP
Break Rows	2			Break Rows
WSRA17	24	2.1	5.1	Christo's MP & INK MP
SRA23	26	2.31	5.72	Christo's MP & INK MP
Break Rows	2			Break Rows
Q208	22	2	4.9	Christo's MP & INK MP
Q183	22	2	4.9	Christo's MP & INK MP
Total Rows - 148				
Total Ac -29.65				
Total Ha - 12				



Klaka Rd		
Fluming End	Q240 x 24 rows 4.08ac 1.65ha	Tail Drain End
	KQ228 x 24 rows 4.8ac 1.9ha	
	WSRA17 x 24 rows 5.1ac 2.1ha	
	SRA23 x 26 rows 5.72ac 2.31ha	
	Q208 x 22 rows 4.9ac 2.0ha	
	Q183 x 22 rows 4.9ac 2.0ha	
Block 2		

Inkerman 1R Distribution Plot 2023 Block 8				
Variety:	Rows:	Area (Ha):	Area (Ac):	Plant Source
Q240	30	2.06	5.1	Christo's MP & INK MP
KQ228	30	2.06	5.1	Inkerman MP
Break Rows	2			Break Rows
WSRA17	30	2.06	5.1	Christo's MP & INK MP
SRA23	30	2.06	5.1	Christo's MP & INK MP
Break Rows	2			Break Rows
Q208	8	0.55	1.36	Christo's MP & INK MP
Q183	8	0.55	1.36	Christo's MP & INK MP
Total Rows - 140				
Total Ac - 23.07				
Total Ha - 9.34				

