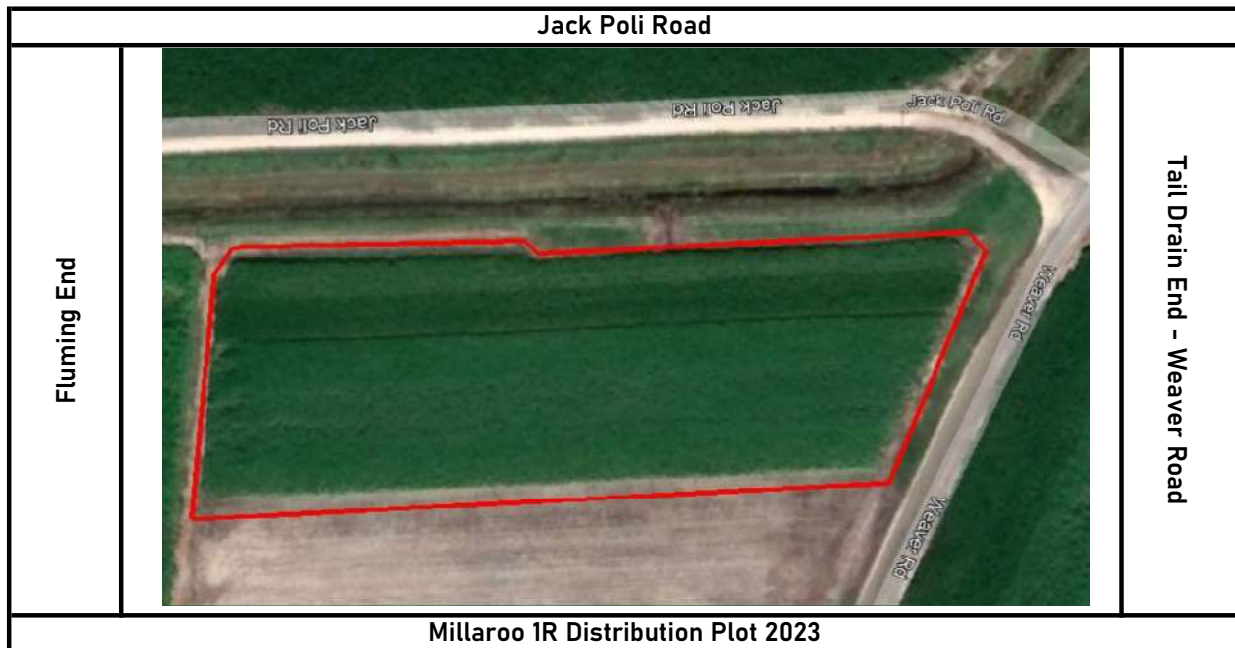


Millaroo Distribution Plot 2023				
Variety:	Rows:	Area (Ac):	Area (Ha):	Plant Source
Q240	16	1.02	0.41	BR MP
WSRA17	6	0.68	0.27	BR MP
Break Row	1			
KQ228	8	0.62	0.25	BR MP
Q208	6	0.62	0.25	BR MP
Break Row	1			
SRA32	10	0.77	0.31	Christo's
Break Row	1			
Q183	8	0.56	0.22	BR MP
SRA23	8	0.56	0.22	BR MP
Total Rows - 65				
Total Ac - 4.83				
Total Ha - 1.93				



Jack Poli Road		
Fluming End	Q240 x 16 Rows - 1.02Ac 0.41Ha	Tail Drain End - Weaver Road
	WSRA17 x 6 Rows - 0.68Ac 0.27Ha	
	Break Row	
	KQ228 x 8 Rows - 0.62Ac 0.25Ha	
	Q208 x 6 Rows - 0.62Ac 0.25Ha	
	Break Row	
	SRA32 x 10 Rows - 0.77Ac 0.31Ha	
	Break Row	
	Q183 x 8 Rows - 0.56Ac 0.22Ha	
	SRA23 x 8 Rows - 0.56Ac 0.22Ha	
Millaroo 1R Distribution Plot 2023		