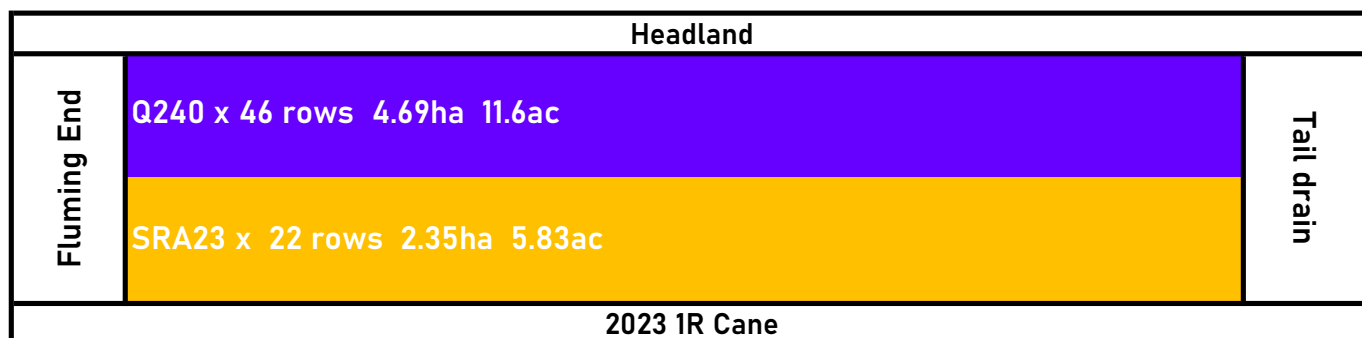
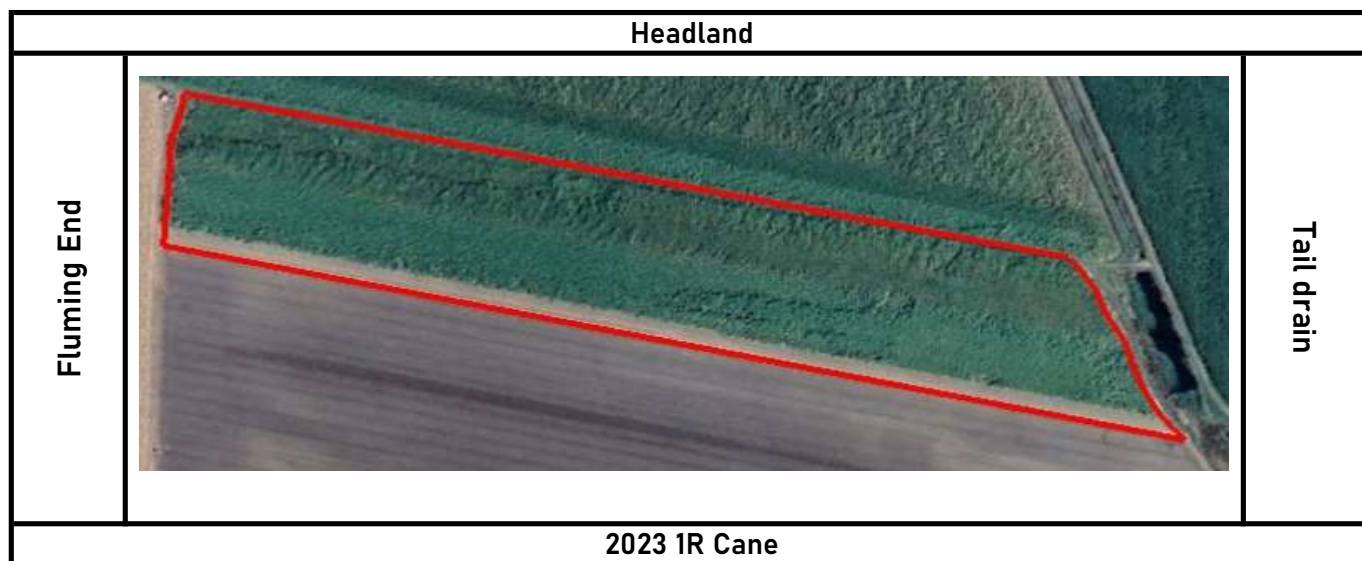
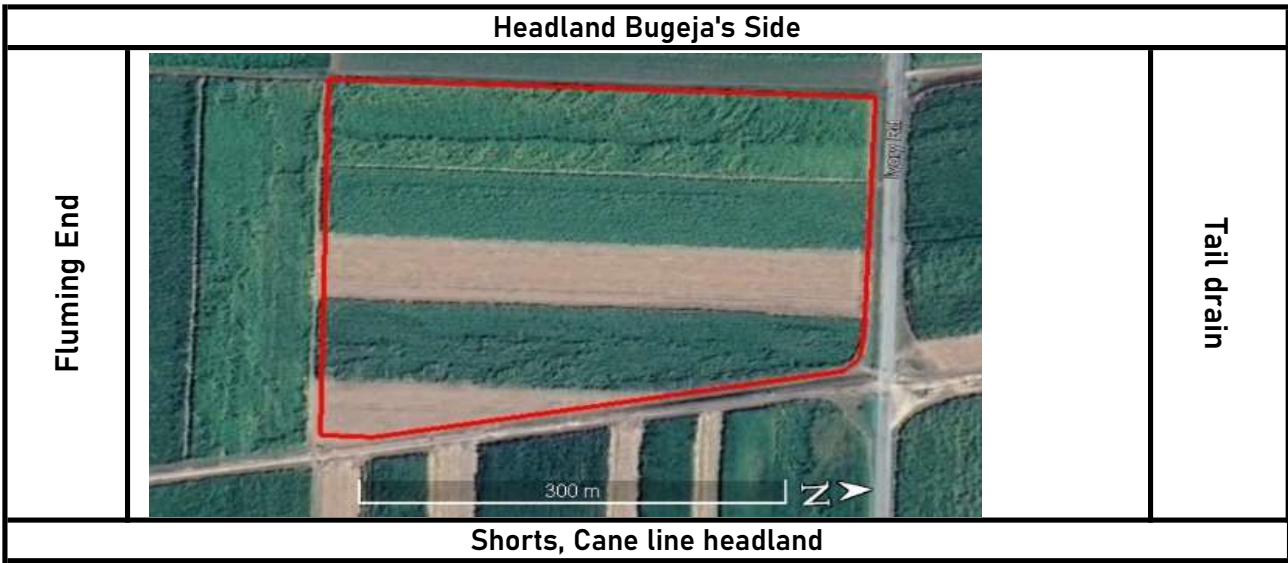


P&K PL Distribution Plot 2023

Variety:	Rows:	Area (Ha):	Area (Ac):	Plant Source
Q240	46	4.69	11.6	P&K MP
SRA23	22	2.35	5.83	P&K MP
Total Rows - 70				
Total Ac - 17.43				
Total Ha - 7.04				



P&K PL Distribution Plot 2023				
Variety:	Rows:	Area (Ha):	Area (Ac):	Plant Source
Q183	16	0.97	2.4	P&K MP
SRA32	22	1.31	3.25	P&K MP
WSRA17	26	1.87	3.87	P&K MP
KQ228	112	5.6	13.86	P&K MP
Total Rows - 178				
Total Ac - 23.38				
Total Ha - 9.75				



Headland Bugeja's Side		
Fluming End	Q183 x 16 rows 0.97ha 2.4ac	Tail drain
	SRA32 x 22 rows 1.31ha 3.25ac	
	WSRA17 x 26 rows 1.87ha 3.87ac	
	KQ228 x 112 rows 5.6ha 13.86ac	
Shorts, Cane line headland		

P&K PL Distribution Plot 2023				
Variety:	Rows:	Area (Ha):	Area (Ac):	Plant Source
Q232	21	1.4	3.48	P&K MP
Q208	21	1.43	3.54	P&K MP
Total Rows - 42				
Total Ac - 7.02				
Total Ha - 2.83				



Ivory Road		
Tail Drain End	<p>Q232 X 21 rows 1.4ha 3.48ac</p> <p>Q208 x 21 rows 1.43ha 3.54ac</p>	Fluming End
2023 2R Cane		